

TECHNICAL INFORMATION BOWLUS FINE ARTS CENTER

205 East Madison Ave.
Iola, Kansas 66749

Mailing Address:
Bowlus Fine Arts Center
205 East Madison Ave.
Iola, Kansas 66749

Telephone:
Bus. Office: 620 365-4765
Tech Office: 620 365-4784
Stage: 620 365-4784

WEB SITE:
www.bowluscenter.org

General Information

Technical Services

Technical Director
Jeff Jordan
Office: 620-365-4765
Stage: 620-365-4784

jeff.jordan@bowluscenter.org

Assistant Technical Director

John Higginbotham
john.higginbotham@bowluscenter.org

Front Office

Executive Director
Susan Raines
Office: 620-365-4765

susan.raines@bowluscenter.org

Book Keeper / Box Office/ Hospitality

Traci Plumlee
Office: 620-365-4765

traci.plumlee@bowluscenter.org

Local Information

Time: Iola Kansas is in the Central Time Zone.

Hotels:

America's Best Value Inn
1315 N. State St.
Iola, KS 66749
620-365-5161
Res: 888-315-2378
13 blocks from theatre
restaurant adjacent

Super 8
200 Bill's Way
Iola, KS 66749
620-365-3030
Res: 800-454-3213
12 Blocks from theatre
Continental breakfast

Regency Inn
14 N. State St.
Iola, KS 66749
620-365-2183
7 Blocks from theatre

General Information

RESTAURANTS WITHIN WALKING DISTANCE OF THE BOWLUS (# blocks)

<p>Around the Corner (1) 110 S. Jefferson Ave. (620) 228-5779 Mon.-Fri. 6:30am-5pm Sat.-Sun. – 8am-7pm</p>	<p>El Charro Mexican (3) 19 W. Madison (620) 365-7771 Mon.-Sat. 11am-10pm Sun. 11am-7pm</p>	<p>Bolling’s Meat Mkt & Deli (6) 201 S. State St. (620) 380-6328 Mon.-Sat. 11am-7pm Sun. 11am-3pm</p>	<p>McDonald’s (6) 312 W. Madison Ave. (620) 365-7571 Mon.-Thur. 6am-11pm Fri.-Sat. 6am-midnight Sun. 7am-11pm</p>
<p>China Palace (8) 110 N. State St. (620) 365-3723 Buffet & Menu Tues.-Fri. 11am-2pm & 4:30-8pm Sat. 4:30-8pm, Sun. 11am-2pm</p>	<p>Rookie’s Sports Bar & Grill (3) 105 E. Jackson Ave. (620) 228-5322 Sun.-Wed. 11am-9pm Thur.-Sat. 11am-2am Happy Hour Mon-Thur. 3pm- 6pm</p>	<p>The Iola Pharmacy (1) 109 E. Madison Ave. (620) 365-3176 Mon.-Fri. 9am-7pm Sat. 9am-5pm Drinks and snacks only.</p>	<p>Sonic Drive-In (6) 301 W. Madison Ave. Fri.-Sat. 6am-midnight Sun.-Thur. 7am-11pm</p>

RESTAURANTS AND FOOD VENDORS WITHIN THE CITY OF IOLA

<p>El Jimador Mexican 902 N State St. (620) 365-7300 Mon.-Thur. 11am-9pm Fri.-Sat. 11am-10pm Sun. 11am-8pm</p>	<p>The New Greenery 1303 N. State St. (620) 365-7743 Sun.-Thurs. 7am-9pm Fri.-Sat. 7am-10pm</p>	<p>The Inn Club 1303 N. State St. (620) 365-7743 Sun.-Wed. 5pm-9pm Thur.-Sat. 5pm-10pm – Will stay open later on Fri/ Sat if busy!</p>	<p>B&B Country Café 324 W. Garfield St. (620) 365-9691 Fri. 6am-2pm Sat.-Sun. 11am-9pm</p>
<p>A & W Family Restaurant 1421 East St. (620) 365-3011 Sun.-Thur. 10am-9pm Fri.-Sat. 10am-10pm</p>	<p>Coronado’s Mexican 1401 East St. (620) 365-8385 Mon.-Fri. 11am-2pm Mon.-Sun. 5pm-9pm</p>	<p>Pizza Hut – Wing Street 1612 N. State St. (620) 365-5991 Sun.-Thur. 11am-10pm Fri.-Sat. 11am-11pm</p>	<p>Subway 706 N. State St. (620) 365-8088 Mon.-Sat. 8am-10pm Sun. 9am-9pm</p>
<p>Dudley’s Done-Right BBQ 2402 N. State St. (620) 380-6580 Tues.-Sat. 11am-9pm</p>	<p>Taco Bell 1602 N. State St. (620) 365-6820 Everyday 10am-11pm</p>	<p>King’s Sandwich Shop 321 S. State St. (620) 365-6271 Mon.-Fri. 10am-10pm Sat. 11am-7pm</p>	<p>Sam & Louie’s Pizza 2150 N State St (620) 380-6900 Sun.-Thurs. 11am-9pm Fri.-Sat. 11am-10pm</p>
<p>Iola Walmart Supercenter 2200 N. State St. (620) 365-6981 Deli open until 8pm Retail open 24 hours</p>	<p>Dollar General Store 2050 N. State St. (620) 365-3850 Mon.-Sun. 8am-9pm</p>		

Note: Few if any restaurants are open “after show” in Iola. Please let us know if this is a problem and we will be glad to help make arrangements.

There is no taxi or limo service in the Iola area. If local transportation is needed please contact the Bowlus Center and we will help make arrangements.

OTHER POINTS OF INTEREST

Prairie Spirit Hiking/Biking Trail
Trailhead at Cofachique Park with additional access from Riverside Park.
Free access south to Humboldt, KS
<http://bikeprairiespirit.com/guides/iola/>

Russell Stover Candies
1995 Marshmallow Ln.
(620) 365-5590
Candy Shop Hours:
Sat. 10am-6pm
Sun. Noon-5pm

Allen County Historical Museum
20 S. Washington Ave.
(620) 365-3051
Special Hours for Keaton Event:
Fri.-Sat. 10:30am-4pm; 5-7pm
Call for special tours.

Historic Iola Square Self-Guided Tour – Between Jefferson, Madison, Washington, and Jackson Avenues.

Look for historic signs on decorative lamp posts!

Laundry

Bennett Coin Laundry
530 S. State St.
620-365-3041
8 blocks from theater
drop off service M-S in the morning.
Open seven days a week

America's Best Value has coin laundry for guest use.

Emergency Numbers

Iola Police Department
2 W. Jackson
Iola KS 66749
620-365-4960

Iola Fire Department
408 N. Washington
Iola KS, 66749
620-365-4972

Allen County Regional Hospital
3066 N. Kentucky St.
Iola, KS, 66749
(620) 365-1000

Dental Care - Chiropractic Services
Please contact the Bowlus Center
and we will be happy to assist you in
locating a professional in that area.

General Information- continued

Parking

Parking is permitted on streets around the Bowlus Center for vehicles of all sizes. Vehicles may not be left unattended in the alley behind the Bowlus Center. The Bowlus has a parking lot behind the building on Buckeye street that all production vehicles can park in, there is also several city lots near the Bowlus that permit overnight parking. There is a church lot across the street that will permit us to park empty trucks and busses at most times but most can fit in the parking lot on Buckeye street.

Shore power is available on the street next to the building (west side). However it is limited to one 120v 20a outlet.

Handicapped Access

Most areas of the Bowlus Center are handicapped accessible. The main Auditorium level is accessible from two locations. There is a ramped entrance on the west side of the building that leads to the auditorium. This is our primary accessible entrance for these areas. The second method of access is from the east doors of the building via a powered chair lift that also provides access to the lower levels of the building. There is an accessible restroom in the front lobby and accessible restrooms on the lower level. The stage is accessible from front of house via the stage right entrance. The balcony is not accessible. There is handicapped seating in the auditorium is a both ends of rows AA, and behind M (total 8 spaces) also behind the last row of the main floor with chairs for their companions (total 8 spaces).

Driving directions

From the West - Wichita Kansas- Take I-35 north or KS Hwy. 254 east to Eldorado.

From Eldorado take US Hwy. 54 east to Iola. The Bowlus Center is located on Hwy. 54 (Madison Av.) one block east of the third stoplight. The Bowlus Center will be on your right side. The trip will take about 2 1/2 hours.

From the North - Kansas City- take I-35 south to exit 215 and go south on US Hwy 169 to Iola. Exit at US Hwy. 54 and turn right. The Bowlus Center is 1/2 block past the second stoplight on your left side. The trip will take about 2 hours.

From the South - Tulsa Oklahoma- Take US Hwy 75 north to Yates Center Kansas. Take US Hwy. 54 east to Iola. The Bowlus Center is located on Hwy. 54 (Madison Av.) one block east of the third stoplight. The Bowlus Center will be on your right side. The trip will take about 2 1/2 hours.

From the East - Take US Hwy. 54 to Iola. The Bowlus Center is 1/2 block past the second stoplight on your left side.

Please call us and we will be happy to provide more detailed directions or directions from other locations.

LIGHTING

Power: 120/208v 3ph 400a/leg. Lugs in disconnect, located downstage left in room. Power is shared with stage dimmers.

Dimmers: 96 ETC Sensor dimmers. 2.4 kw each

Control board: ETC Ion version 1.7.1 located back of main floor

Houselights: Control S.L., S.R., Back of main floor, Spot booth and lighting control room.

Circuits: 96 2.4 kw circuits. 24 FOH and 72 on stage. See attached circuit chart.

Front of House Position: (to curtain line) Beams - 50' throw at 40 deg.

Balcony rail - 50' throw at 10 deg.

Coves - 10' throw at 15 to 50 deg.

Equipment inventory:

All fixtures use stage pin Connectors.

Front of House Fixtures

12 ETC S-4 19 deg 750w (usually in beam, may move) 6.25" gel

3 - ETC S-4 10 deg 575w (usually in beam, may move) 12" gel

4 Kleigel 8" Fresnel 1kwQ (usually in cove, may move) 10" gel

2 Century 8" Fresnel 1kwQ (usually in cove, may move) 10" gel

Stage Fixtures

4 ETC S-4 19 deg. 575w 6.25" gel

10 ETC S-4 26 deg. 575w 6.25" gel

16 ETC S-4 36 deg. 575w 6.25" gel

25 40 deg. Colortran 1k w

24 ETC Fresnels 750 watt

12 Altman 1KAF 6" Fresnel with barndoors 1000 w 7.5" gel

20 Kleigel 6" Fresnel 500w 6.5" gel

20 Capitol 87' Striplight 4 circuit 600w per circuit 5.75x6.25 gel

4 Propar MR16 PAR 3" gel

12 PAR 64 WFL 1000w 10" gel

Lighting -continued

Cable and Hardware

50 twofers

32 10' cables

26 25' cables

11 50' cables

10 S-4 pattern holders A size

12 S-4 pattern holders B size

15 Altman pattern holders B size

4 side arms

4 50lb bases with 12' pipes

Gel - We have a basic stock of Roscolux gel

SOUND

Power: 120/208v 3ph. 100a per leg. Lugs in Disconnect, located downstage left in room. 120v 1ph 20a - 2 stage left, 2 stage right, 1 back of main floor. These are not isolated circuits but are clean.

Wiring: Access to house sound snakes and permanent wiring is downstage left. Permanent wiring to house speaker cluster, and several inputs on-stage. 125 ft of snake is required to reach the house mix position.

Control Location: For live performance the house mix position is at the rear of main floor center.

Hearing Assist System: Williams Sound Large Area FM Listening System. If a sound board other than ours is used then you must provide a feed to this system.

Monitor: Monitor in dressing rooms, band room (used for Green Room), Can be placed in hall outside dressing rooms, spot booth and traproom

Permanent microphone over stage or a 600 ohm Mic. level feed.

Production Communications: ClearCom single channel.
Permanent stations S.L., spot booth. Inputs S.L., S.R., back of main floor, dimmer room, projection booth, 6 beltpacks, 6 headsets, 1 handset.

Equipment Inventory:

Mixing console:
Yamaha M7CL-48
Mackie DFX-12 12 ch mixer

Fixed Speakers:
Nexo GEO S12 hung in Vertically Arrayed formation 5 per side.
Two Nexo RS18 SubBass's located in Pit.
Two Nexo S8 front fills.

In House Snake:
Rapco P32x8 (Run to sound both)

Portable Speakers:
6 JBL SRX712M used as floor monitors.
1 Galaxy Hotspot,

Sound -continued

Power conditioning Furman PL-plus and PL-8

Microphones:

- 4 EV N/D 767 (handheld vocal)
- 4 Shure SM 58 (handheld vocal)
- 4 Shure SM 57 (instrument / general purpose)
- 2 Crown PCC 160 (floor mics.)
- 2 Audio-Technica AT853 (chor mics.)
- 1 Audio-Technica 857 (lecturn mic.)
- 2 AKG D900 shotguns
- 2 Shure SM94 condenser
- 2 Radio Shack PZM with boundaries (floor or table mics.)
- 1 Crown PZM with boundary (floor mic.)
- 2 Shure UT4 wireless systems w SM58 or bodypack (WL93)
- 1 Shure W15HT/87 wireless Mic., w W25 DR receiver (SM 87 head)
- 1 Shure W10BT wireless lavalier transmitter, w Shure WL93t mic
- 1 Shure Beta 52 (bass mic.)
- 4 Audio Technica ATM 41a (handheld vocal)
- 1 Audio Technica R40 (handheld vocal w switch)
- 3 EV666 (general purpose)
- 1 Shure 55
- 1 Audio Technica ATR25 stereo (video recording)
- 6 Countryman Type 85 DI
- 2 Passive DI

Playback:

- 1 Newmark MP102 CD/MP3 player single tray
- 1 Denon DN-F300 Solid-State audio player
- 1 Sony CDP591 CD player
- 1 Sony MDS JE-510 Minidisk
- 1 Sony MZ-N707 Minidisc
- 1 Denon DN-C615 CD/MP3 player

Signal Processing:

Yamaha M7CL internal signal processing.

Outboard:

- 1 Rane GE27 27 band EQ
- 1 MXR 31 band EQ
- 1 Rane GE 14 Dual 14 band EQ
- 2 Rane MC 60 dual 31 band EQ
- 1 BSR EQ 3000 dual 10 band EQ
- 2 Digitech Studio 100 Multi effect unit
- 1 Digitech DSP256XL Multi effect unit
- 2 DBX 166A Dual Compressor Limiter
- 1 DBX AFS224 Feedback Suppressor

Sound - continued

Amplifiers:

2 NEXO NXamp 4x4
2 Yamaha XP5000

In House Not Used at this time:

1 QSC 1400 (dual 200w at 8 ohm)
1 QSC 1200 (dual 100w at 8 ohm)
2 Crown CE-1000 (dual 275w at 8 ohm)

Cable and hardware:

18 - 50' microphone cables
17 - 25' microphone cables
15 1/4 TRS speaker cables (various lengths)
12 Speakon cables of various lengths
14 microphone stands
9 booms
3 desk stands
10 gooseneck

Management

Production Office - Room on lower level near dressing rooms and Bowlus office will be made available if requested in advance. Room is equipped with a telephone, work table and high speed internet (computer must have network card). Fax and copier are available in the Bowlus Center office.

Green Room - One of two rooms are used as Green Room. One of these rooms is 34'x 54' and located just outside the stage. The other is 28'x42' and is on the lower level near the dressing rooms. Both rooms have stage monitor and general paging from the stage. Both rooms have some limitations so please contact us in advance if you have specific requirements.

Stage Managers Console- The Stage Managers Station is stage left. There is a single channel production communication system. There is a telephone and first aid kit at this location.

Rehersal Rooms- There are several rooms that may be used for rehersal by prior arrangement.

Crew - Paid students and part time adults. Some of the adults may be union.

Union Local is: IATSE 190, PO Box 3052 Wichita, KS 67201

Busines Agent - Curtis Davis 316 267-5927

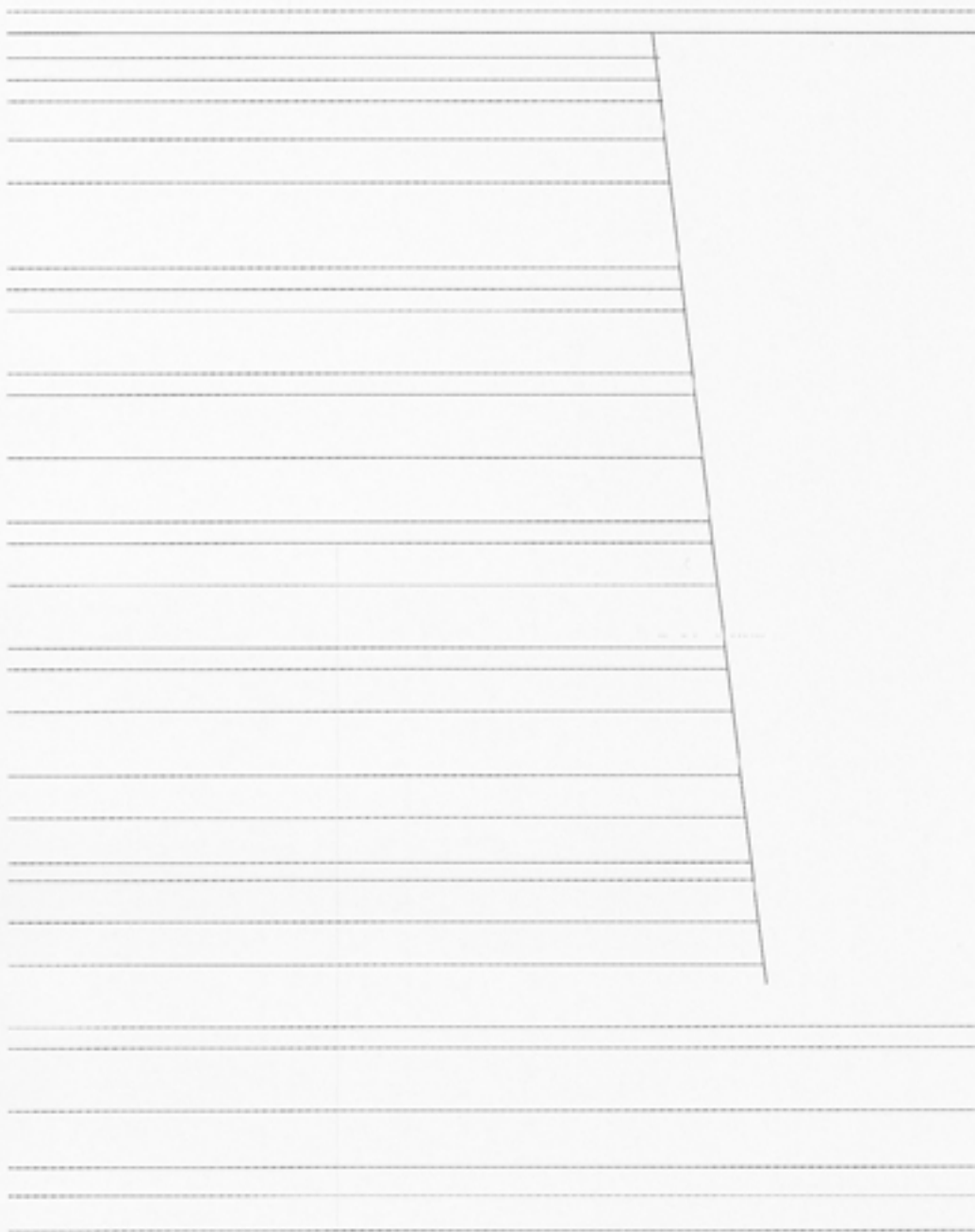
System is a single purchase counterweight system operated from stage left at floor level. There is no high weight gallery. All sets have 550lb capacity unless noted. All measurements are from the upstage side of the smoke pockets.

Updated July of 2012

LINE DISTANCE U.S. PRESENT USE NOTES

1	1' 0"	Main Act Curtain	May open up or travel- not removable
2	1' 10"	Main teaser and first legs	teaser may not be removed
3	2' 6"	open	
4	3' 10"	1st Electric	1000lb capacity
5	5' 4"	open	
6	6' 5 1/2"	2nd leg	
7	7' 4"	open	
8	8' 4"	open	
9	9' 4"	2nd teaser	
10	9' 9"	open	
11	10' 10"	2nd Electric	1000lb capacity
12	11' 10"	3rd leg	
13	13' 4"	open	
14	14' 4"	open	
15	14' 10"	Midstage Traveler	Not Movable
16	16' 4"	open	
17	17' 4"	3rd teaser	
18	17' 10"	4th leg	
19	19' 4"	3rd Electric	1000lb capacity
20	20' 10"	open	
21	21' 4"	open	
22	22' 10"	4th teaser	
23	23' 4"	5th Legs	
24	23' 10"	open	
25	25' 10"	4th Electric	1000lb capacity
26	27' 9 1/2"	open	
27	28' 2 1/2"	open	
28	28' 7 1/2"	open	
29		open	
30		Rear Traveler	Not Movable
31	29' 4"	Cyclorama	Not Movable
32	29' 10"	storage	

Not Correct Line set Placement. Please see page before!



OPEN (STORAGE)
U.S. CYC
OPEN
HOUSE DROP (FOREST w PATH)
HOUSE DROP (FOREST w POND)

4TH ELECTRIC

OPEN
BLACK TRAVELER
4TH TEASER

OPEN
OPEN

3RD ELECTRIC

4TH LEG
2ND TEASER

OPEN

OPEN
OPEN

OPEN

3RD LEG

2ND ELECTRIC

OPEN
2ND TEASER

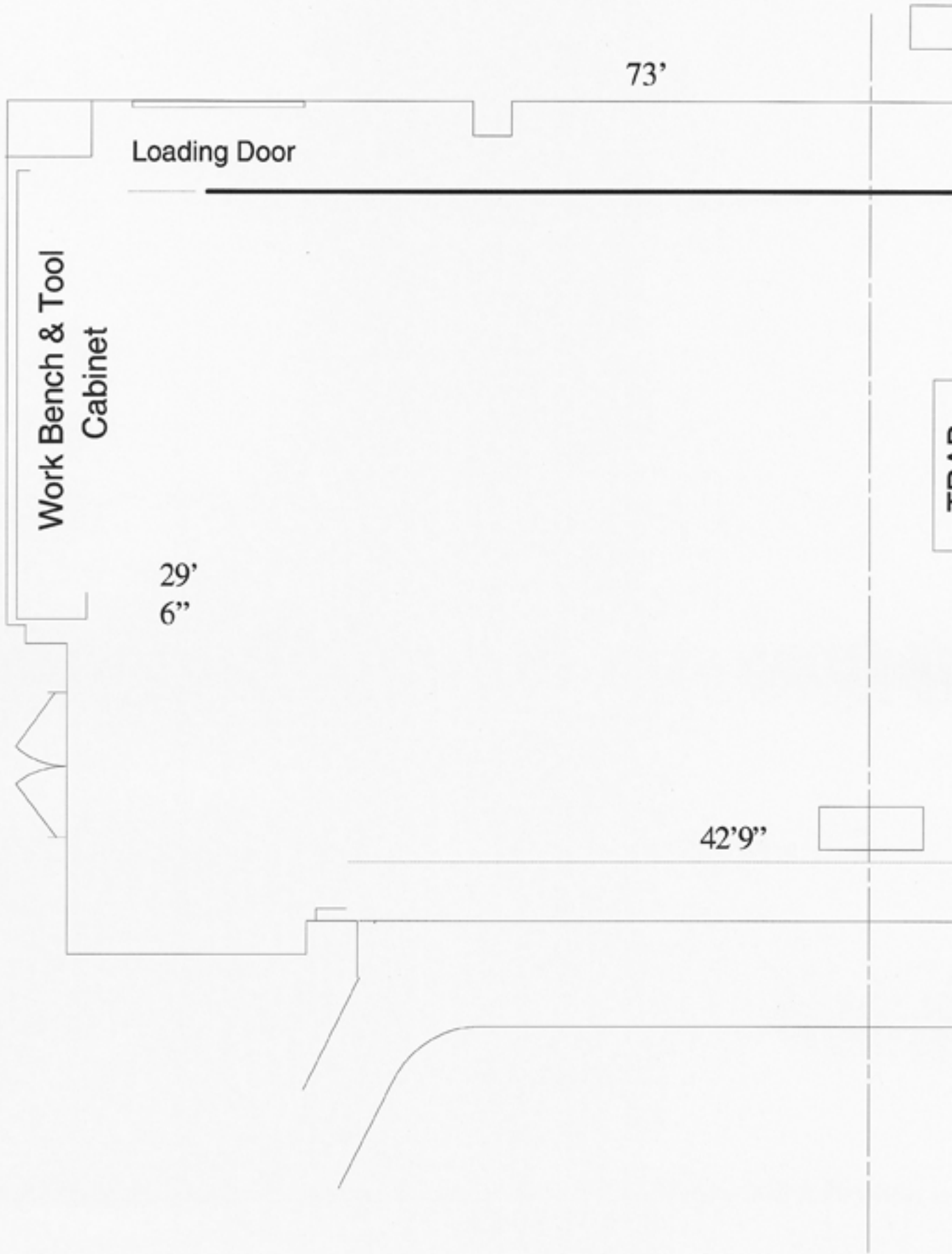
GOLD TRAVELER

OPEN

2ND LEG
MOVIE SCREEN

1ST ELECTRIC

OPEN
RED TEAS. & 1ST LEG
MAIN ACT



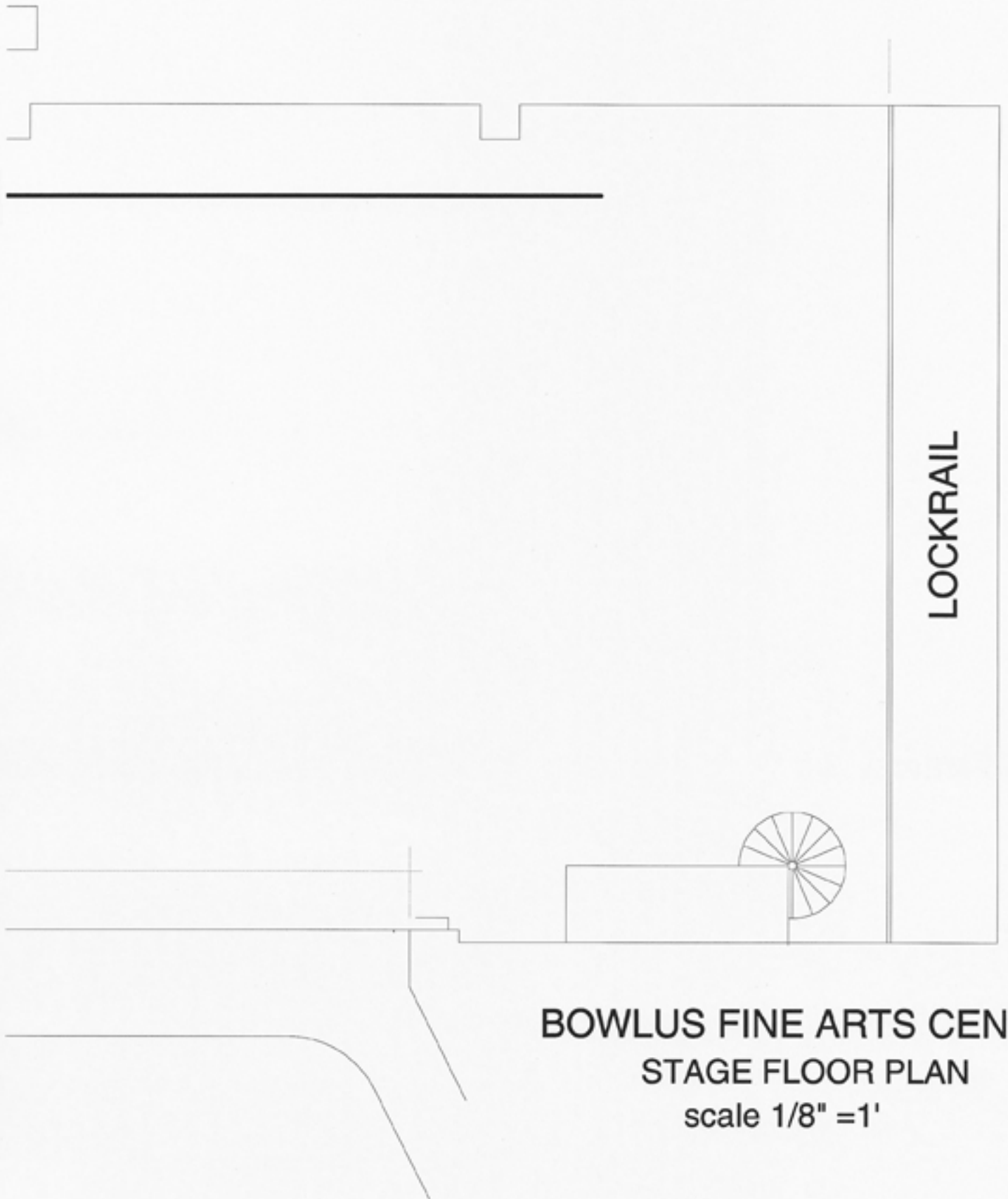
73'

Loading Door

Work Bench & Tool
Cabinet

29'
6"

42'9"



BOWLUS FINE ARTS CENTER
STAGE FLOOR PLAN
scale 1/8" = 1'